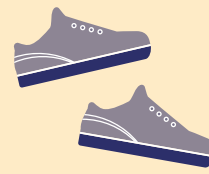


Shoe Sizing Conversion Chart



Harper Lace Up Size Conversion

UK	CM	US	EU
9J	17.5	10J	27
10J	18.3	11J	28
11J	19.1	12J	30
12J	19.9	13	31
13J	20.7	1	32
1	21.4	2	33
2	22.3	3	34
3	23.1	4	36
4	24	5	37
5	24.8	6	38
6	25.7	7	39
7	26.5	8	40
8	27.3	9	42
9	28.2	10	43
10	29	11	44.5
11	29.9	12	46
12	30.7	13	47



Darcy Lace Up Size Conversion

UK	CM	US	EU
9J	17.2	10J	27
10J	18	11J	28
11J	18.8	12J	29
12J	19.6	12J	31
13J	20.4	1	32
1	21.2	2	33
2	22	3	34
3	22.8	4	35
4	23.6	5	37
5	24.2	6	38
6	25	7	39
7	25.8	8	40
8	26.6	9	41
9	27.4	10	42
10	28.2	11	43
11	29	12	44
12	29.8	13	45



Renaldo Lace Up Size Conversion

UK	CM	US	EU
5	25.8	6	38
6	26.5	7	39
7	27.2	8	40
8	27.9	9	42
9	28.5	10	43
10	29.2	11	44.5
11	29.9	12	46
12	30.5	13	47

**Quality leather
school shoes at
affordable prices**



T-Bar Shoe Size Conversion

UK	CM	US	EU
9J	17.2	10J	27
10J	18	11J	28
11J	18.8	12J	29
12J	19.6	12J	31
13J	20.4	1	32
1	21.2	2	33
2	22	3	34
3	22.8	4	35
4	23.6	5	37
5	24.2	6	38
6	25	7	39
7	25.8	8	40
8	26.6	9	41
9	27.4	10	42
10	28.2	11	43
11	29	12	44
12	29.8	13	45



Skate Sneaker Size Conversion

UK	CM	US	EU
9J	18	10J	27
10J	18.6	11J	28
11J	19.3	12J	30
12J	20	13	31
13J	21.3	1	32
1	22	2	33
2	22.6	3	34
3	23.3	4	36
4	24	5	37
5	25.3	6	38
6	26	7	39
7	26.6	8	40
8	27.3	9	42
9	28	10	43
10	29.3	11	44.5
11	30.3	12	46
12	31.3	13	47



Velcro Sneaker Size Conversion

UK	MM	CM
9J	199	19.9
10J	206	20.6
11J	212	21.2
12J	219	21.9
13J	226	22.6
1	232	23.2
2	239	23.9
3	246	24.6
4	252	25.2
5	259	25.9
6	266	26.6
7	272	27.2
8	279	27.9
9	286	28.6
10	292	29.2
11	299	29.9
12	306	30.6