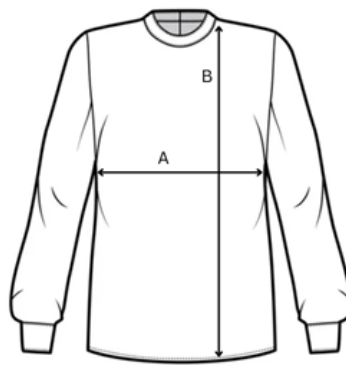


\$33.00

inc. GST & Freight



A - 1/2 Chest (measured 2cm below arm hole)
B - Length (measured from shoulder point to hem)

Sizing Guide

How to find the best fit:

i. Using an existing top (for example a school polo shirt), lay it out flat on a surface and from 2.5cm down the underarm point, measure across to the other side. With the measurement taken, match it up to the sizing chart and always go up in size if the measurements fall in between 2 sizes.

OR

ii. Measure the full chest circumference along the breast line. Halve the measurement and add 10cm. Match this number against the chart; again, always going up in size if the measurement falls in between two sizes

SIZE	SIZE TYPE	A CHEST (cm)	B LENGTH (cm)
6	Children size	39cm	51cm
8	Children size	41.5cm	55.5cm
10	Children size	44.5cm	60cm
12 (2XS)	Children size	47.5cm	64.5cm
14 (XS)	Children size	50cm	67.5cm
S	Adult size	53.5cm	70.5cm
M	Adult size	56cm	74.5cm
L	Adult size	58.5cm	77cm
XL	Adult size	61cm	79.5cm
2XL	Adult size	63.5cm	82cm
3XL	Adult size	66cm	83cm
4XL	Adult size	68.5cm	84cm
5XL	Adult size	71cm	85cm